



Gilt metal base colour. Combining metal pigments with inks, the result is highly realistic.



Appearance of the metal surface with three light steps.



To finish, I apply two shadow tones.

THE LEATHER BELT

I decided to paint the leather belt in orangish brown as this combines well with the blue on the coat (orange and blue are complementary colours).

To begin, the base colour is applied evenly. Then, I add the first highlights over all light surfaces.

The final lights must be irregular, using a stippling motion with the brush to simulate the texture of leather.

For the first shadows, the colour must be very thin and applied in several coats for smooth transitions. Adding black ink to the first shadow mixture, I obtain a dark colour that I use for outlining and reinforcing shadows.



The base colour for the belt is a deep brown.



First light step.



The second highlight is applied in a stippling motion with a paintbrush.



The final lights mark the edges clearly.



First shadow applied.



In a very dark colour, I outline the seams and holes in the belt.

EYES

2nd Lights

1st Lights

Base iris

1st Light + XNAC-17

ACS-005: n° 3 + XNAC-17

ACS-005: n° 1

Lacrimal

Pupil

Reflelection

Shadows, Eyeball

Upper lashes

ACS-001 + XNAC-31

XNAC-02

XNAC-01

XNAC-01 + XNAC-18

ACS-013: n° 6

4th Lights

3rd Lights

2nd Lights

1st Lights

Base

1st Shadows

2nd Shadows

ACS-001: n° 4

XNAC-17 + ACS-001: n° 4

1st Light + XNAC-17 + ACS-001: n° 4

Base + XNAC-17 + ACS-001: n° 4

XNAC-45 + ACS-001: n° 4 + XNAC-17 + XNAC-31

Base + XNAC-08 + XNAC-29

1st Shadow + ACS-013: n° 6 + XNAC-29

Red tones

Cool tones

Beard tones

FACE TONES

XNAC-31

ACS-012: n° 5

ACS-010: n° 5





	2 nd Lights	1 st Lights	Base	1 st Shadows	2 nd Shadows	
<u>SHIRT</u>	XNAC-01	Base + XNAC-01	XNAC-01 + ACS-012: n° 3 + XNAC-27	Base + XNAC-27	1 st Shadow + XNAC-27	Shirt Decoration ACS-002: n° 4
<u>SHIRT DECORATION</u>	1 st Light + XNAC-01	Base + XNAC-01	XNAC-35 + XNAC-31 + XNAC-01	Base + XNAC-32 + XNAC-26		
<u>COAT</u>		Base + ACS-012: n° 3	XNAC-27 + XNAC-16	XNAC-27	Base + XNAC-29 + XNAC-26	
<u>WOOD ON THE PISTOL</u>		XNAC-46 + XNAC-37	ACS-006: Red Ink + Brown Ink	Base + ACS-007: n° 5		
<u>GILT METAL</u>	2 nd Light + ACS-008: n° 2	1 st Light + ACS-008: n° 1 + n° 6	Base + ACS-008: n° 1	ACS-008: n° 3 + n° 4 + n° 6	ACS-008: n° 3 + n° 4	1 st Shadow + ACS-008: n° 5
<u>BELT</u>	2 nd Light + XNAC-37	XNAC-46	Base + XNAC-46	XNAC-49	Base + XNAC-29 + ACS-005: N° 5	1 st Shadow + Black Ink



<https://goo.gl/ylpu64>

FACEBOOK





I also covered her face with blu-tack to avoid smudging paint whilst applying the shadows, which could impair the desired skin tone.

Another advantage was that both figures have their eyes closed, which makes life easier when painting their faces.

The facial gestures appear strange until the figures are joined together whereupon both faces are perfectly unified into the kiss.



Base colour applied with airbrush, painting from below upwards so that paint fills into the crevices.



In the other direction we apply highlights of overhead light, gently enhancing folds.



After finishing the shading we remove the blu-tack and finish off by hand the unpainted areas.



Skin base tones are a blend of the lower face colour with light tones added to the front parts.



We paint the front parts with 2nd light (see colour chart) and the rest of the face with 1st light.



Only lower jaw shadows are denoted, covering the rest with an intermediate tone from the base colour.



Face details completed; hair painted with No.2 Brown set (ACS-013) with touches of No.6 from the same set for shadows.



Detail of the uniform, the lines and stars are clearly defined and present no problems to painting. We used No.3 from the White set (ACS-003) + No.3 from the Non-metals set (ACS-012).





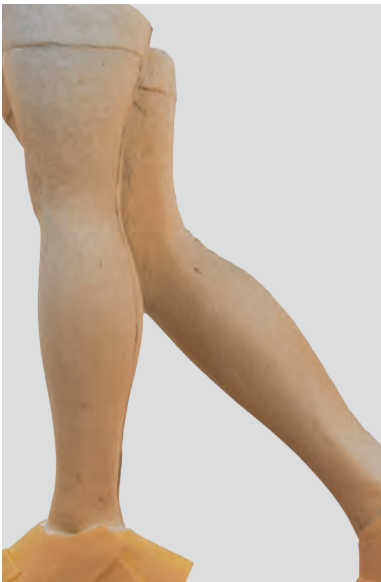
Base colour applied by airbrush following same steps as the sailor.



Although the primer is white we emphasised highlights on uniform folds using matt white XNAC-01.



We add shadow to areas furthest from daylight sources.



Using skin base tone, shadows are denoted on the legs.



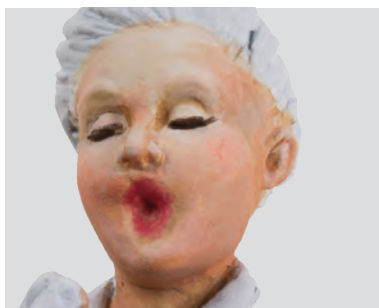
Now we apply a general light spray to the leg surfaces using No.3 from the White set (ACS-003).



We paint the shoes and stocking seams. Once the legs are glued to the body we check the degree of transparency and add touches of white or flesh tone to the stockings as necessary.



The face base colour was the same as for the sailor, blending the 1st light tone on the front areas with the base colour of the rest of the face.



We finish off by adding subtle highlights and shades, without going to excess, the nurse's face.

The trickiest part was probably the nurse's stockings which, as can be seen, have this garment's characteristic seam.

The idea was not to make them transparent like a pin-up, but to depict white stockings with slight traces of skin tone.



KULMBACH

"THE END OF AN ERA"





2015

HISTORY OF MINIATURES

NICOLE LOWELL

"IN ERA"



figure